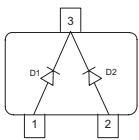


Silicon Variable Capacitance Diode

- For FM radio tuner with extended frequency band 77MHz to 108MHz
- Designed for application requiring back-to-back diode configuration for optimum signal distortion and detuning
- High tuning ratio at low supply voltage (car radio)
- Monolithic chip (common cathode) for perfect dual diode tracking
- Good C- V linearity
- High figure of merit


BB844


Type	Package	Configuration	L_S (nH)	Marking
BB844	SOT23	common cathode	1.8	SNs

Maximum Ratings at $T_A = 25^\circ\text{C}$, unless otherwise specified

Parameter	Symbol	Value	Unit
Diode reverse voltage	V_R	18	V
Peak reverse voltage	V_{RM}	20	
Forward current	I_F	50	mA
Operating temperature range	T_{op}	-55 ... 150	°C
Storage temperature	T_{stg}	-55 ... 150	

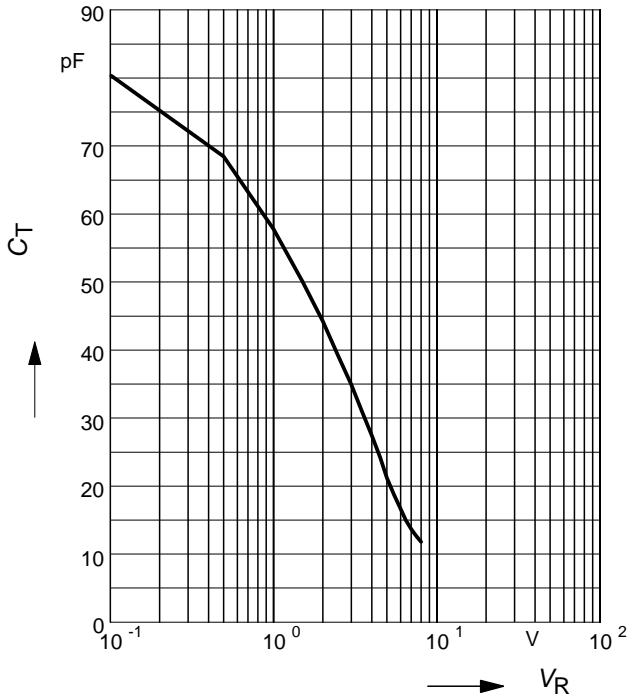
Electrical Characteristics at $T_A = 25^\circ\text{C}$, unless otherwise specified

Parameter	Symbol	Values			Unit
		min.	typ.	max.	
DC Characteristics					
Reverse current $V_R = 16\text{ V}$ $V_R = 16\text{ V}, T_A = 85^\circ\text{C}$	I_R	- -	- -	20 200	nA
AC Characteristics					
Diode capacitance $V_R = 2\text{ V}, f = 1\text{ MHz}$ $V_R = 4\text{ V}, f = 1\text{ MHz}$ $V_R = 8\text{ V}, f = 1\text{ MHz}$	C_T	42.5 25 10	43.75 27 11.5	45 29 13	pF
Capacitance ratio $V_R = 2\text{ V}, V_R = 8\text{ V}, f = 1\text{ MHz}$	C_{T2}/C_{T8}	3.2	3.8	-	
Capacitance matching ¹⁾ $V_R = 2\text{ V to } 8\text{ V}, f = 1\text{ MHz}$	$\Delta C_T/C_T$	-	-	1.5	%
Series resistance $V_R = 2\text{ V}, f = 100\text{ MHz}$	r_S	-	0.28	-	Ω

¹For details please refer to Application Note 047.

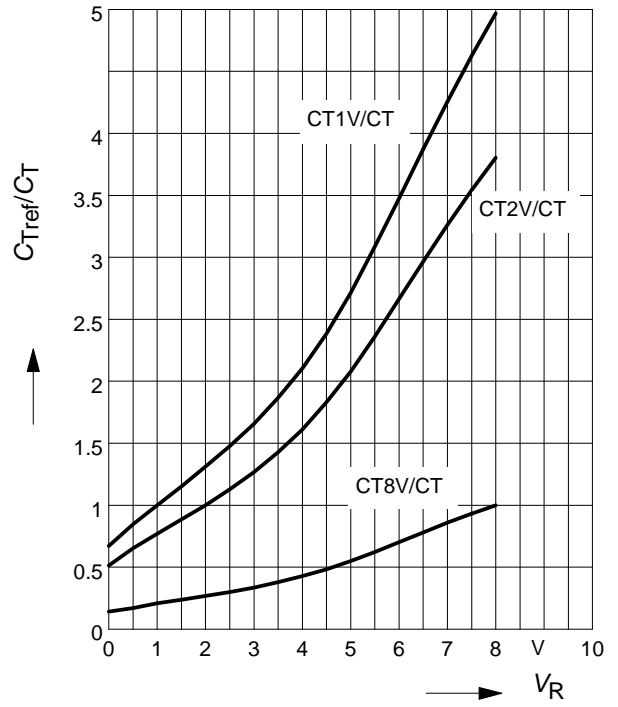
Diode capacitance $C_T = f(V_R)$

$f = 1\text{MHz}$

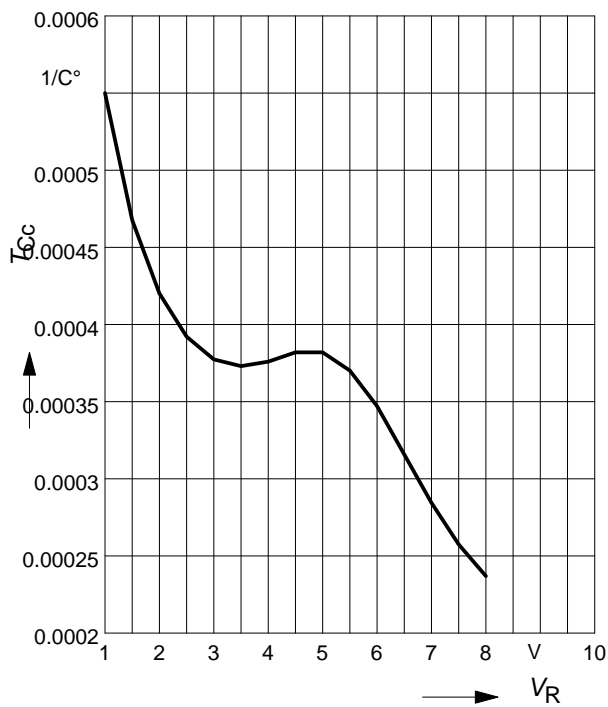


Capacitance ratio $C_{Tref}/C_T = f(V_R)$

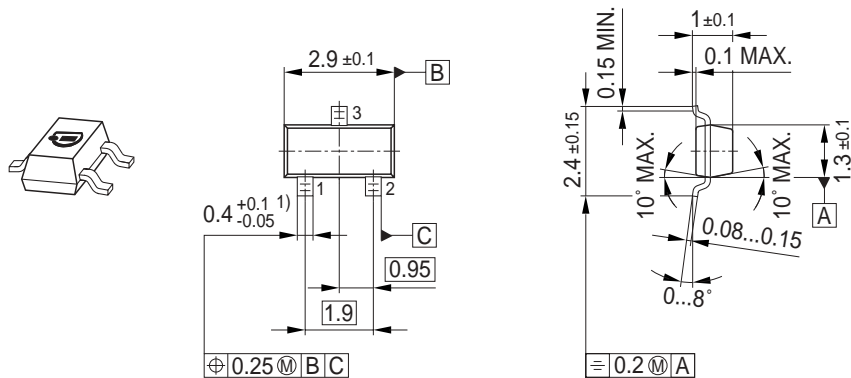
$f = 1\text{MHz}$



Temperature coefficient of the diode capacitance $T_{Cc} = f(V_R)$

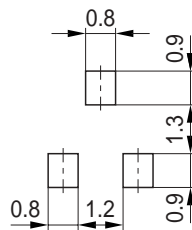


Package Outline

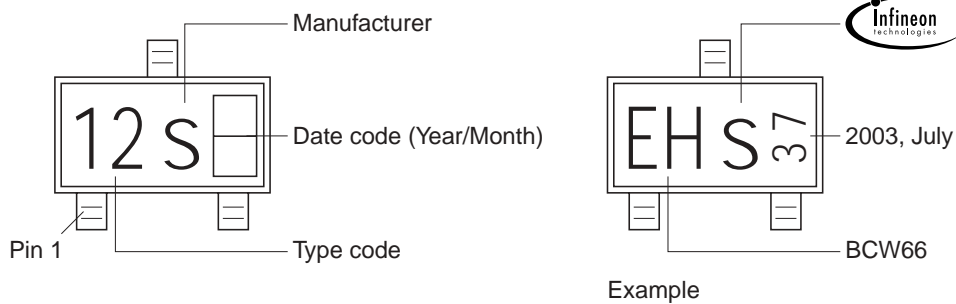


1) Lead width can be 0.6 max. in dambar area

Foot Print

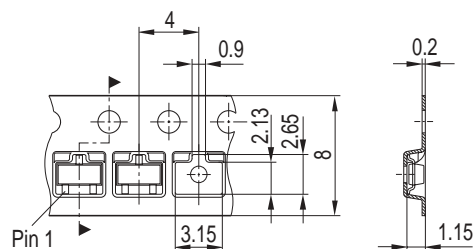


Marking Layout



Standard Packing

Reel \varnothing 180 mm = 3.000 Pieces/Reel
 Reel \varnothing 330 mm = 10.000 Pieces/Reel



Published by Infineon Technologies AG,
St.-Martin-Strasse 53,
81669 München
© Infineon Technologies AG 2005.
All Rights Reserved.

Attention please!

The information herein is given to describe certain components and shall not be considered as a guarantee of characteristics.

Terms of delivery and rights to technical change reserved.

We hereby disclaim any and all warranties, including but not limited to warranties of non-infringement, regarding circuits, descriptions and charts stated herein.

Information

For further information on technology, delivery terms and conditions and prices please contact your nearest Infineon Technologies Office (www.infineon.com).

Warnings

Due to technical requirements components may contain dangerous substances. For information on the types in question please contact your nearest Infineon Technologies Office.

Infineon Technologies Components may only be used in life-support devices or systems with the express written approval of Infineon Technologies, if a failure of such components can reasonably be expected to cause the failure of that life-support device or system, or to affect the safety or effectiveness of that device or system. Life support devices or systems are intended to be implanted in the human body, or to support and/or maintain and sustain and/or protect human life. If they fail, it is reasonable to assume that the health of the user or other persons may be endangered.